

# MADISON COUNTY HISTORICAL PRESERVATION COMMISSION

Project – Progress - Stories

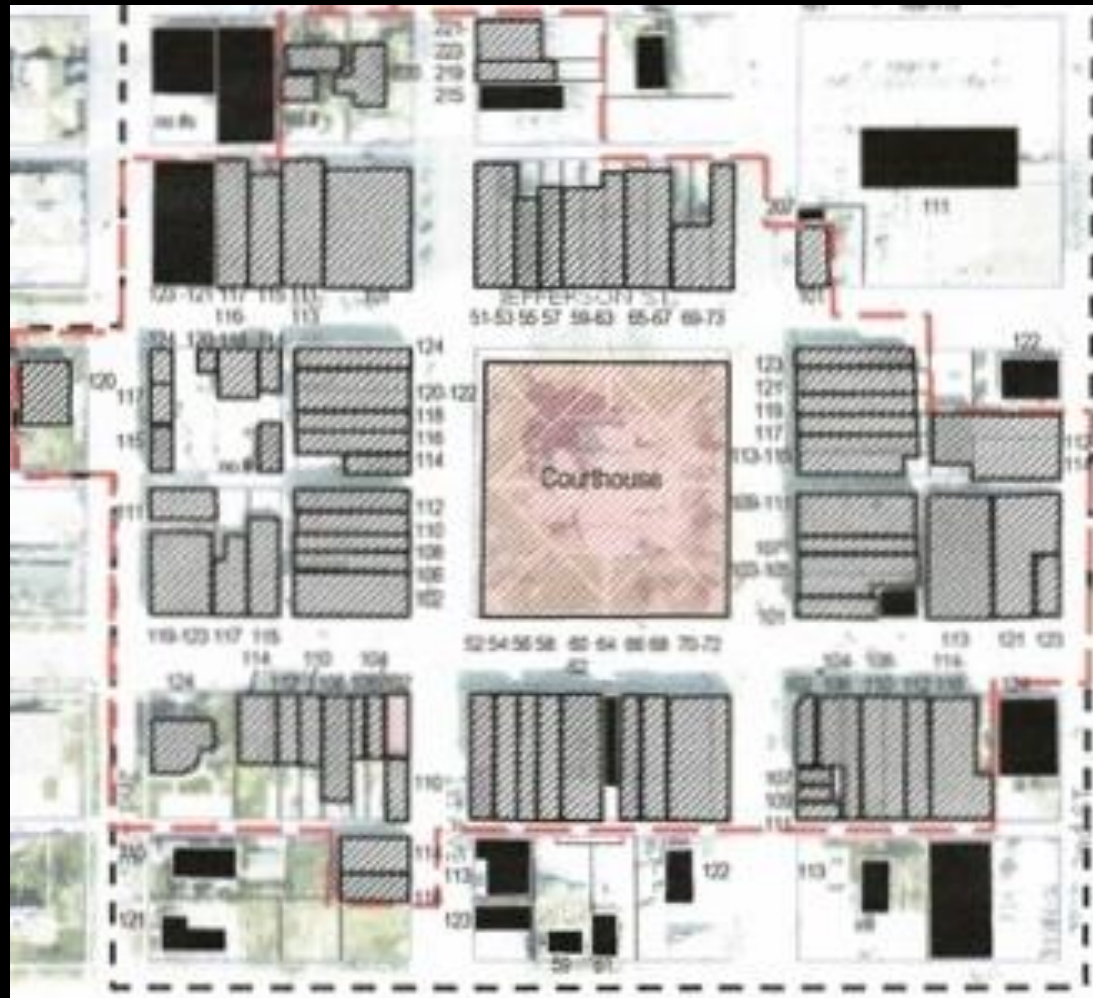


# WHAT IS A NATIONAL HISTORIC DISTRICT?



**Winterset Courthouse Square Commercial District**

# WHERE IS THE HISTORIC DISTRICT?



## WHAT ARE THE BENEFITS?

- **Attract Tourists**
- **Attract New Businesses**
- **Assist Building Owners**
- **Assist Local Economy**

## WHAT DOES IT COST?

A \$12,000 CLG grant is received once 70% of the work is completed.

A \$2500 Local Grant was received from the Greater Madison County Community Foundation the money was used for photographic work

The grant goes to:

- A professional consultant who creates our submission
- Required photography, copying, and office supplies.

Time is another important element:

1,300 volunteer hours have been accrued, valued at over \$22,000



## WHO IS THE COMMISSION?



- Dave Braga, Chair
- Brenda Hollingsworth,  
Vice-Chair
- Molly Clause, Secretary
- Tammy Ellwanger
- Sally Oldham
- Steve Reed
- Rick Seely

# THE WORK OF THE VOLUNTEERS

## Historic Photo Display of Madison County Stone Buildings

Photographer: Beth Gray



## PROJECT PHASES

### Phase One:

- Intensive Survey and Evaluation
- Set Historic District Boundary

### Phase Two:

- Write Nomination to National Historic Register



## WHAT DOES THE NOMINATION INCLUDE?

### Survey and Evaluation

- Business environment
- Geological influences
- Effect of transportation
- Economic influences

### Individual Site Inventories

- Architectural description
- Building significance
- Use of building thru time
- Photos and advertisements

This work will be preserved in the Library and Museum

# THE WORK OF THE VOLUNTEERS

Research -- Research -- Research



## VALUABLE RESOURCES

- Madison County histories from 1869, 1879, 1915, and 1984
- WHS Yearbooks from 1915 plus Plat maps, starting in 1875, for advertisements
- MAPS such as the 1869 Bird's Eye View, 1878 Businesses, Class Reunion placemats, and Sanborn Fire maps
- Newspapers – Madisionian's on CD since 1872; microfilm; various paper copies
- Madison County Website for obituaries, lists by trade, personal notes on deaths
- Museum Collection of photos, personal scrapbooks, tax records, ads from probate files, abstract books

# VOLUNTEERS



Jean Fifo – Roslea Johnson



Ron Howell – Linda Smith

Sally Oldham – Carol Liechty – JoAnne Walker  
Molly Clause – Brenda Hollingsworth

## HISTORICAL ANATOMY OF A BUILDING

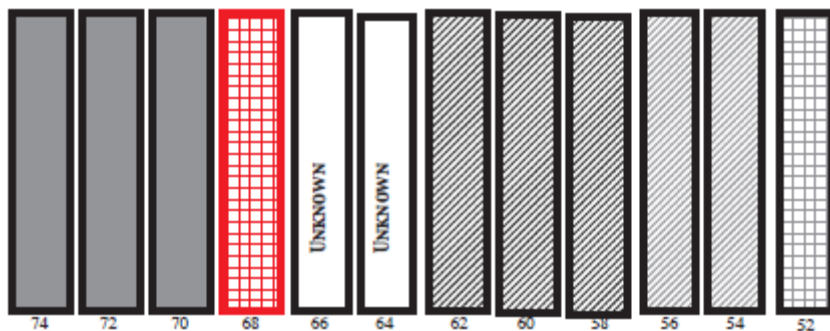
- Approximate date of construction
- Original owner of building and his occupation
- The building's original use
- Major changes in building or use
- Chronological list of owners
- and occupants
- Changes in use or in physical state of building and grounds
- Names of architects and contractor
- Events of importance connected with the structure
- Building's context – relationship to neighborhood and community

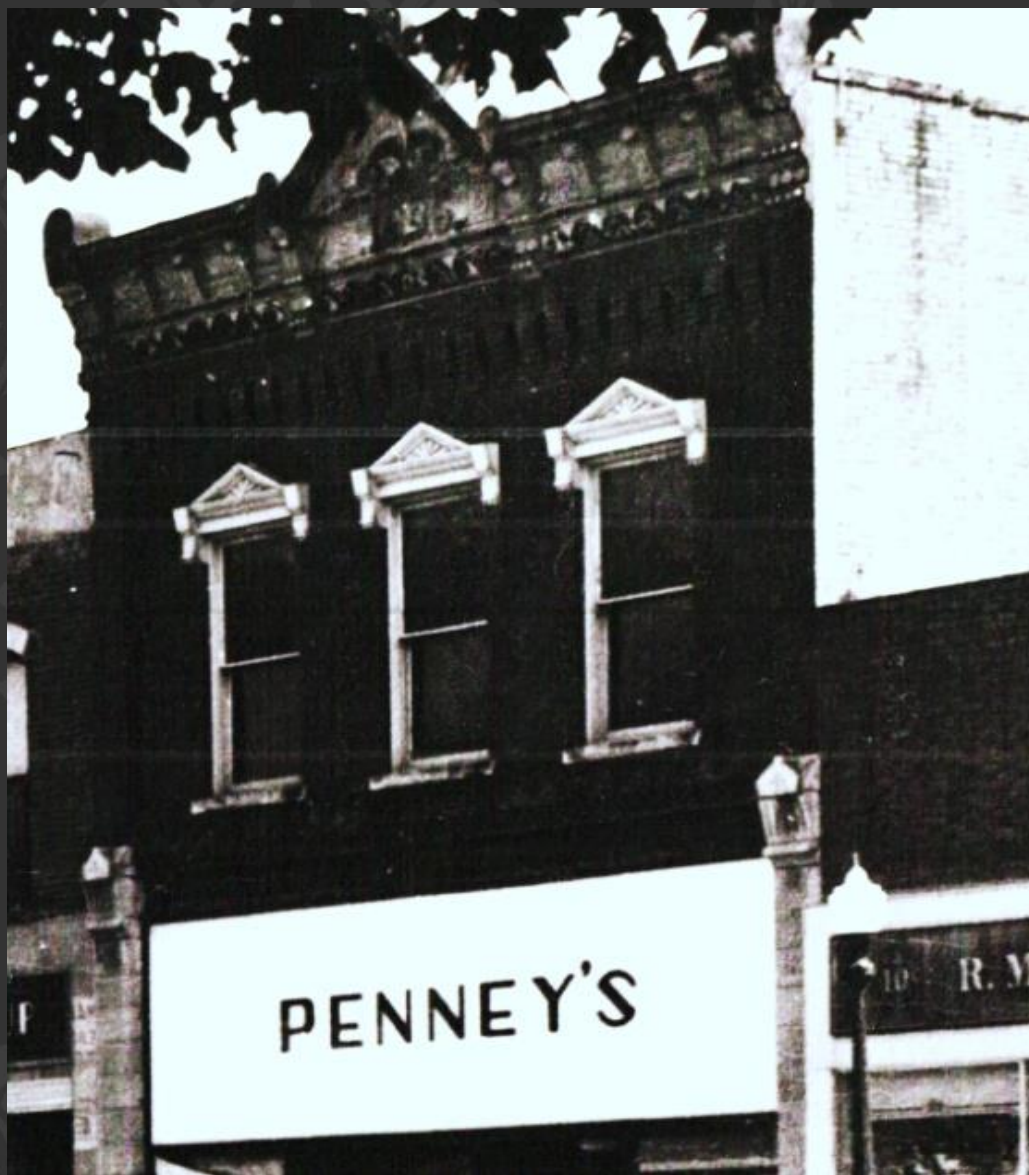


# HISTORY AND MYSTERY

## 68 EAST COURT

1873  
COURT AVENUE





1960's





1939





1873

*East Half - South Side of Square*

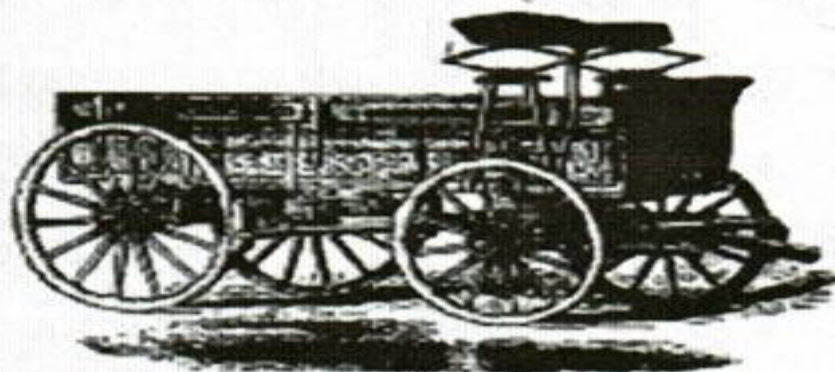




**JULY - INDEPENDENT: HELENA, FRIDA**

**WAGONS !**

**WAGONS !!**



**Fish Bro's and Bain Wagons**  
**VAWTER & CO., AGENTS.**

For Sale on hand and will be delivered by Fish Bros and Bain, at Helena, Idaho, from a large stock of new and second-hand Wagons. All kinds of the Overland FREE WAGON and BAIN WAGON, with the addition of a horse and carriage, and a good mounted driver.

**Groceries, Provisions and Grain,**  
**ALL OF WHICH WILL BE SOLD LOW FOR CASH**

**VAWTER & CO.,**

BROADWAY, HELENA, M. T.

**1876.**

**1876.**

**OVERLAND**



**Freight Line.**

GO THE PRICES!

DECLINE IN DRY GOODS

Goods "Evacuated!"

NEW GOODS!

OCCUPY THE OLD STAND

OUT FOR BARGAINS

JUST ARRIVED AT

S' CASH STORE

at Wells, Blue Bell and Co's Store  
Dry String and Kerosene Oil, Do-  
Evaporator Glass, Hickory "Sticks"

W. W. McKnight, South side Public square

Winterset, Iowa.



JUST RECEIVED AT THE  
PEOPLE'S STORE,

The <sup>1</sup>/<sub>2</sub> LARGEST and most Vared Ai

sortment of Goods ever offered

for sale in this City. They were bought

since the late decline, expressly for this market, and consist of

Everything in the line of DRY GOODS, GROCERIES, HARDWARE,

READY MADE CLOTHING and NOTIONS.

PRICES—Always the lowest in Town. Remember to call at the STONE

STORE FOR CHEAP GOODS.

TO THE

Good People

OF

Madison County

And the rest of the World

GREETING

You are here by recommended to appear

Hawkeye Flag

July 24, 1863



WINTERSET MADISONIAN

J. J. HOLLINGSWORTH.

THOMAS GARLINGER

**HOLLINGSWORTH & CO.,**



Wholesale and Retail Dealer

CANTON CULTIVATORS, NAPERVILLE PLOWS, C

HARDWARE, TINWARE, STOVES, IRON, ST

AND A FULL LINE OF BUILDERS

ROOM---No. 33 South Side of Square.

May 15  
1872



Wm. Payton & Co.

**WM. PAYTON & CO.**

—WHOLESALE AND RETAIL—

**HARDWARE**

STOVES, FARM IMPLEMENTS, ETC.

Winterset, Iowa, June 1 1888

July 24, 1885.	Balance	7 00	
Nov. 20, 1886.	1 Heating Stove	14 00	
" " "	3 joints - Pipe	75	
Nov. 26 1887.	12# nails	50	
		25 25	
	Contra		
Nov. 20 1888	by Cash	9 00	
Dec 14 1887	"	5 00	
July 16 1888.	"	5 00	
		19 00	
		\$6 25	



## 1895 DISASTER



*East Half - South Side of Square*

Winterset, Iowa,

April 14 1897

M Lovelace Estate

To T. F. MARDIS, Dr.

\* BUILDER \* AND \* CONTRACTOR. \*

BRICK AND LIME ALWAYS ON HAND.

Feb 24.97 To Labor Material for  
Vault

\$24 15

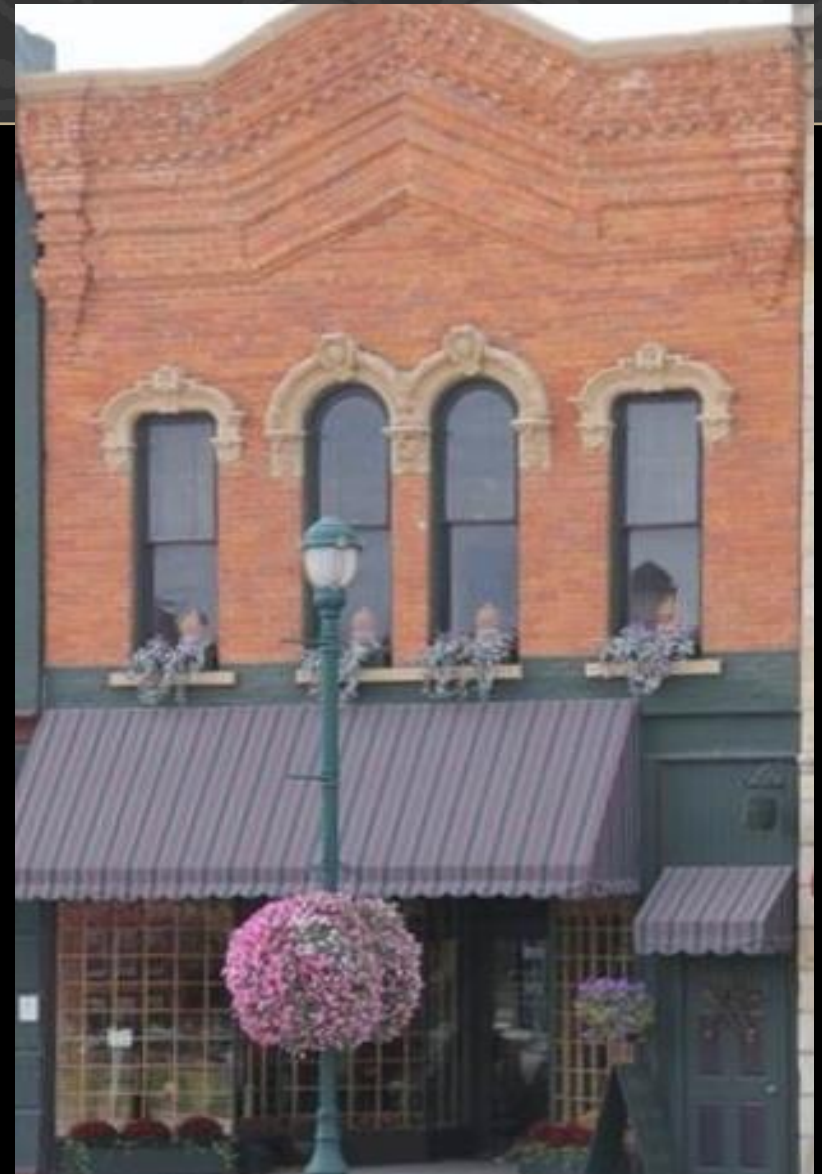
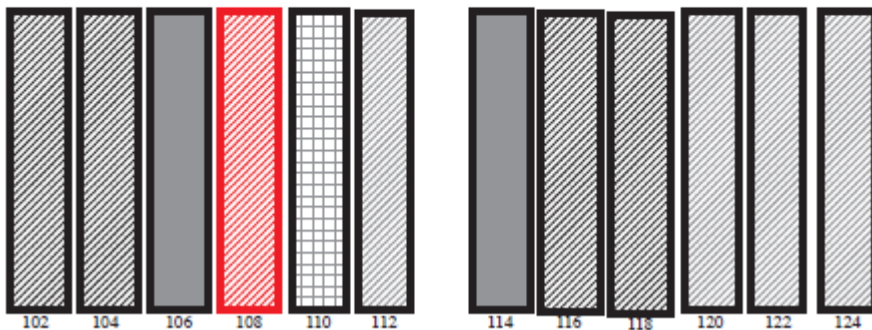


# HISTORY AND MYSTERY

108<sup>TH</sup> 1<sup>ST</sup> AVENUE  
HARVEST CREEK

1873

POLK STREET/NORTH 1ST AVENUE



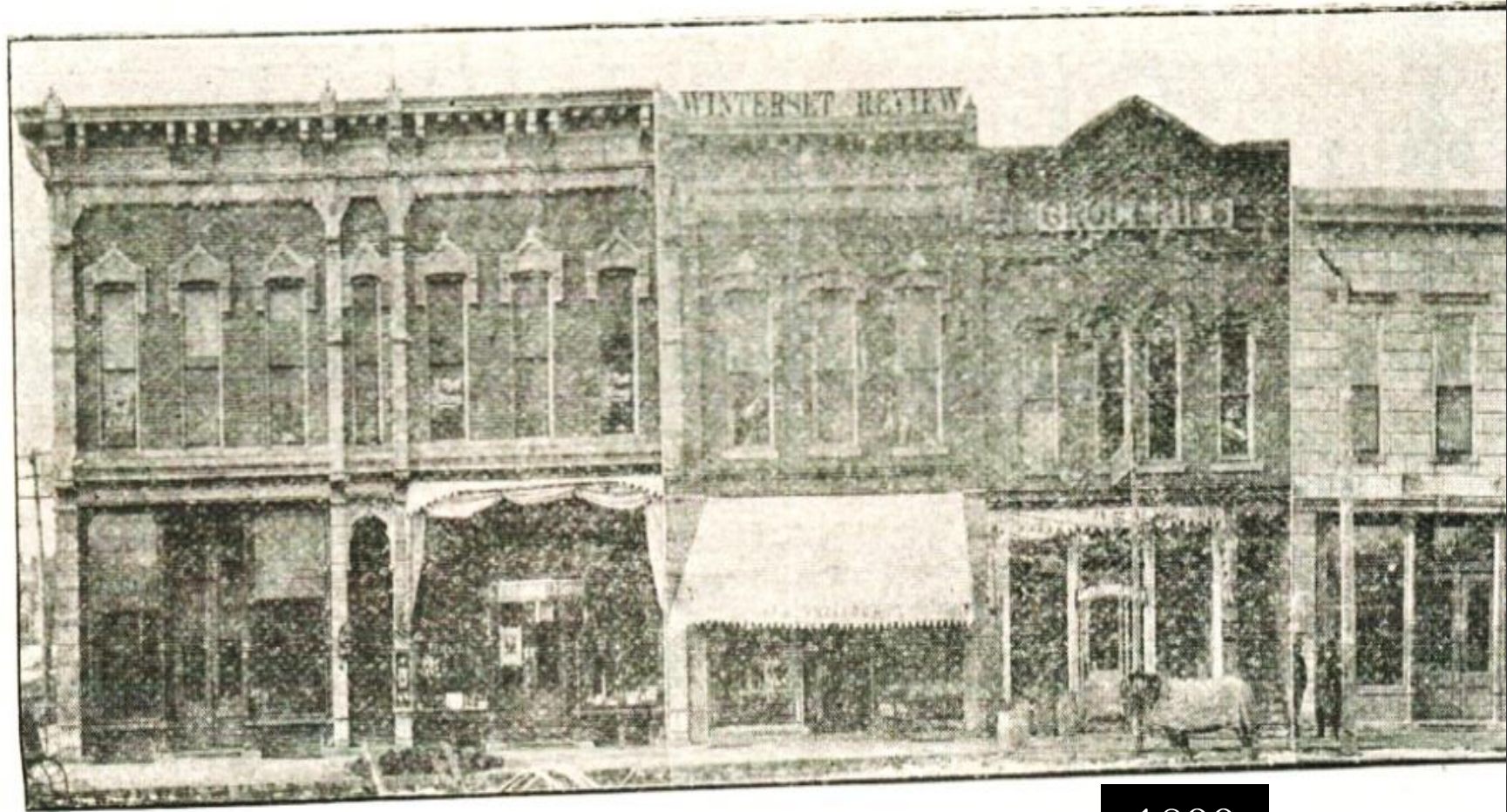




1873

*South Half - West Side of Square*





1899

c. 1900





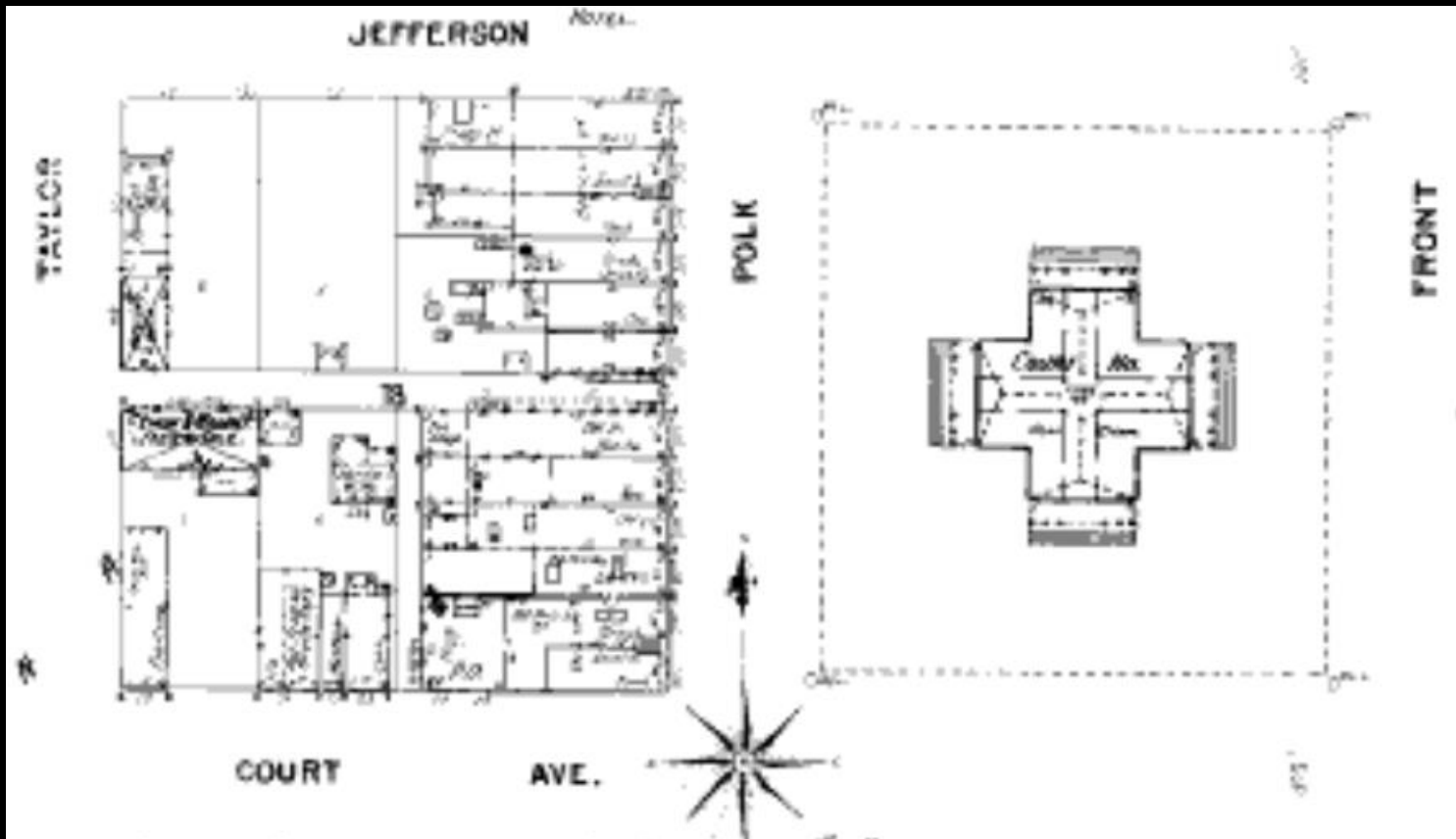


Clothes and Quincannon Department, store of E. E. Smith. Window has up-to-date electric.

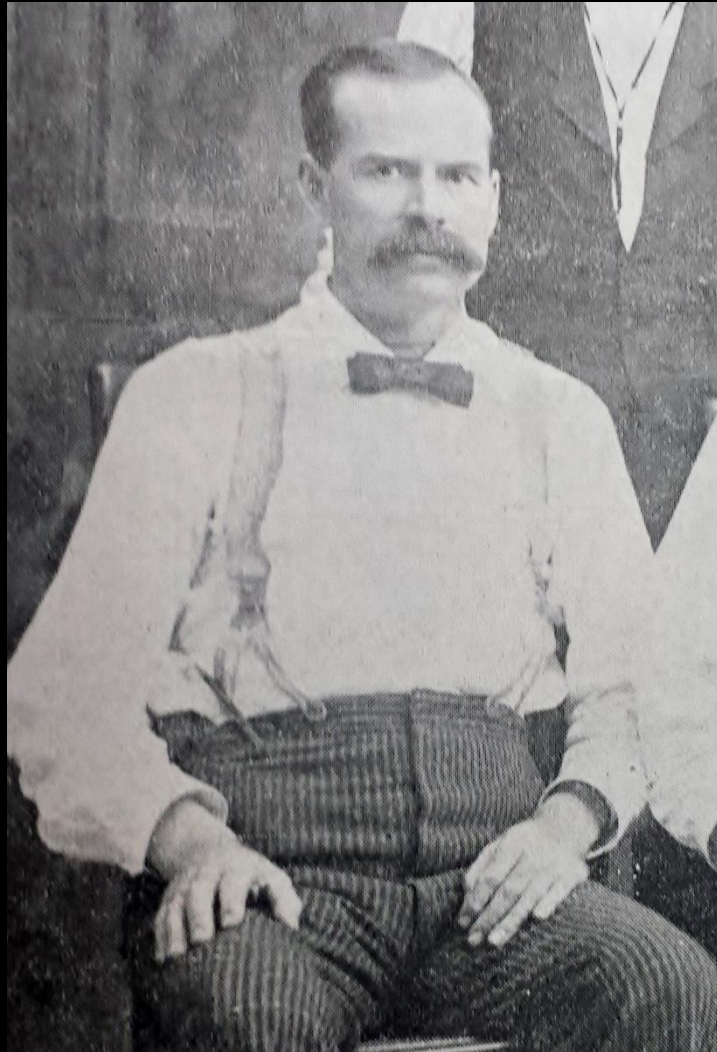
Burned out in Oct. 1905 - Rebuilt in 1910 - made her  
assignment in fall of 1918 -

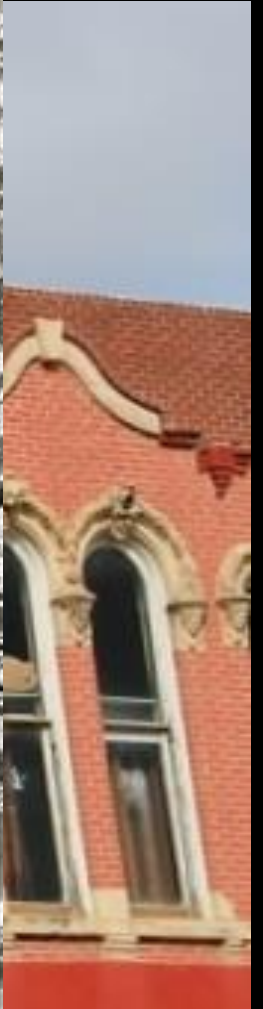


# SANBORN FIRE MAPS



# JAMES EDWARD SMITH





Questions ??